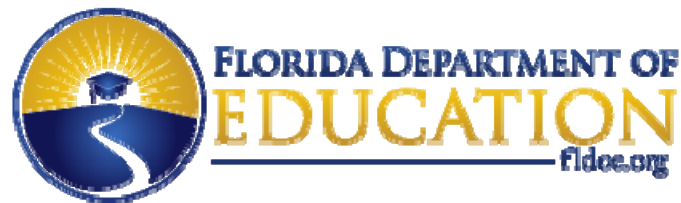




FDOE Single Sign-On (SSO)

Migrating to the new TIBCO System

February 2015



www.FLDOE.org



Agenda

- Welcome
- Brief Overview of Changes
- Web Browser vs. SFTP
- Communication & Security
- Closing

www.FLDOE.org

Secure File Transfer

- TIBCO® Managed File Transfer
- The current TIBCO system is being retired and rebuilt.
- New directories for additional resources.
- Supports scalability and growth.

OLD

- Host =
transfer.fldoe.org
- Outdated technology components
- Small user base
- Supports SSO and CET

NEW

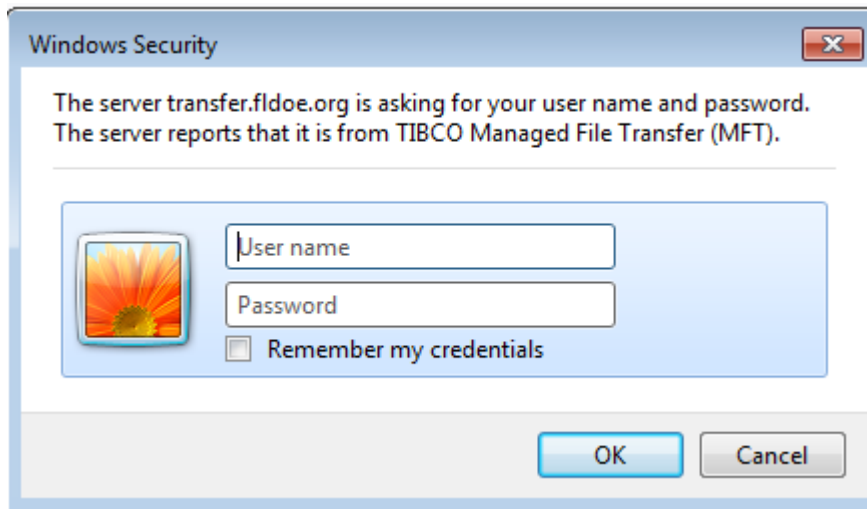
- Host =
xfiles.fldoe.org
- Latest versions of software
- Larger user base; more robust and fault tolerant
- More strenuous security protocols
- Supports more resources

Secure File Transfer

- TIBCO[®] Managed File Transfer
 1. Web Browser
 - Not active unless FLDOE is notified
 2. Secure FTP (SFTP)
 - Port 22 encryption
 - Optional PGP encryption (not active unless FLDOE is notified)

Web Browser

OLD



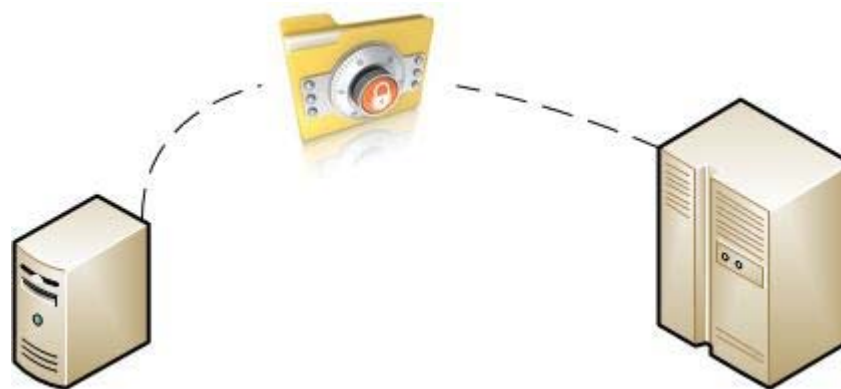
NEW



www.FLDOE.org

SFTP

- Standard network protocol for transferring files
- Transfers files between client and host
- Secure transfer
 - SFTP (SSH FTP)
 - FTPS (FTP using SSL/TLS)



sftp://SSO31ALACHUA@xfiles.fldoe.org - FileZilla

File Edit View Transfer Server Bookmarks Help New version available!

Host: ftp://xfiles.fldoe.org Username: SSO31ALACHUA Password: Port: Quickconnect

Command: ls
Status: Listing directory /
Status: Calculating timezone offset of server...
Command: mtime "CET"
Response: 1418999198
Status: Timezone offsets: Server: -18000 seconds. Local: -18000 seconds. Difference: 0 seconds.
Status: Directory listing successful

Local site: C:\Users\andrea.latham\My Documents\
Remote site: /

Filename	Filesize	F	Last modified
2-Authorization-071414115040.csv	155,107	M	7/14/2014 11:50:48 AM
2-Identity-071414115040.csv	193,308	M	7/14/2014 11:50:48 AM

Filename	Filesize	Filetype	Last modified	Permissions	Owner/Gro...
..					
CET		File folder	12/19/2014 9:2...	d-wx-----	0 0
SSO_PROD		File folder	12/19/2014 9:2...	d-wx-----	0 0
SSO_TEST		File folder	12/19/2014 9:2...	d-wx-----	0 0

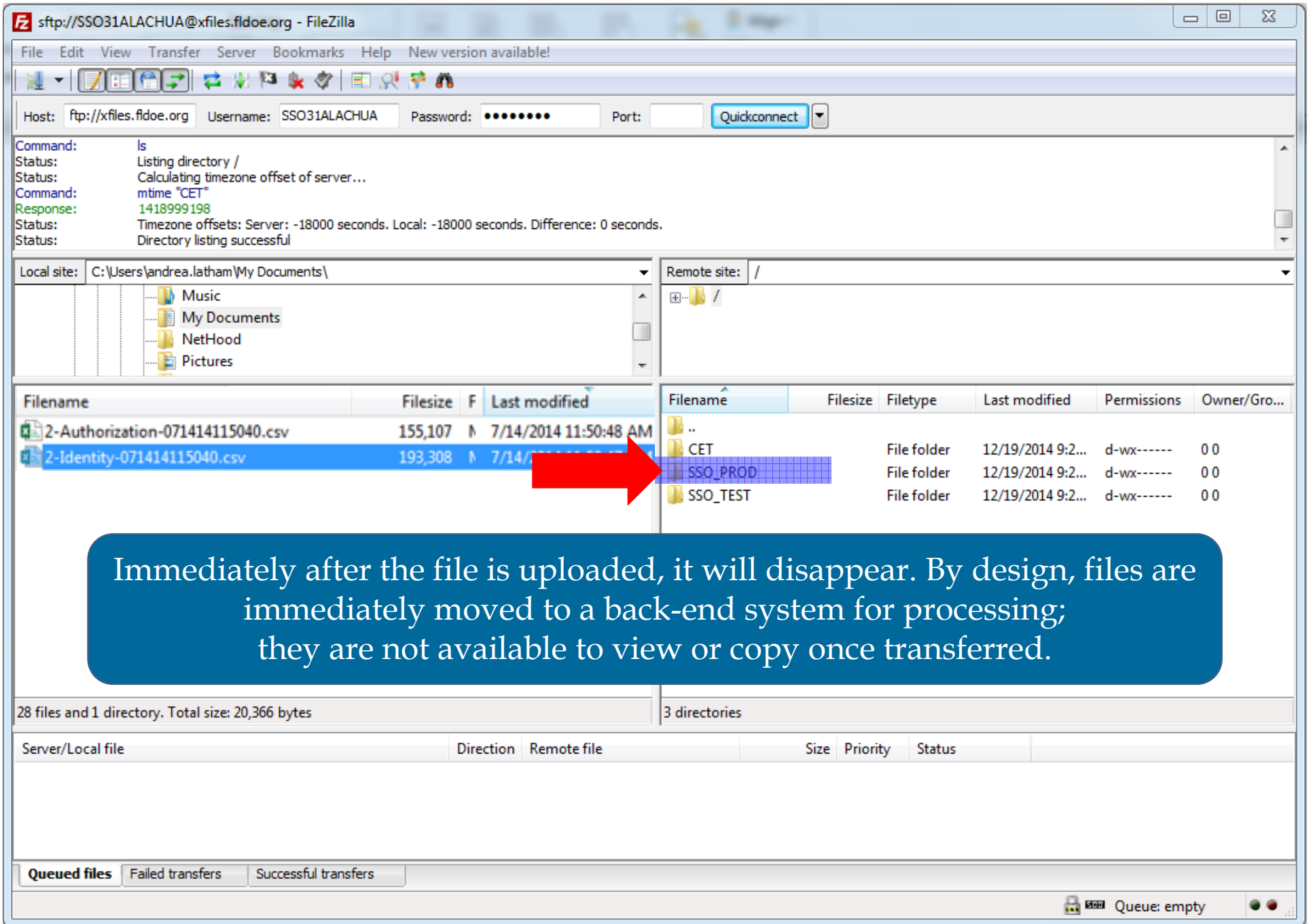
28 files and 1 directory. Total size: 20,366 bytes

3 directories

Server/Local file	Direction	Remote file	Size	Priority	Status
-------------------	-----------	-------------	------	----------	--------

Queued files Failed transfers Successful transfers

Queue: empty



Immediately after the file is uploaded, it will disappear. By design, files are immediately moved to a back-end system for processing; they are not available to view or copy once transferred.

Directories

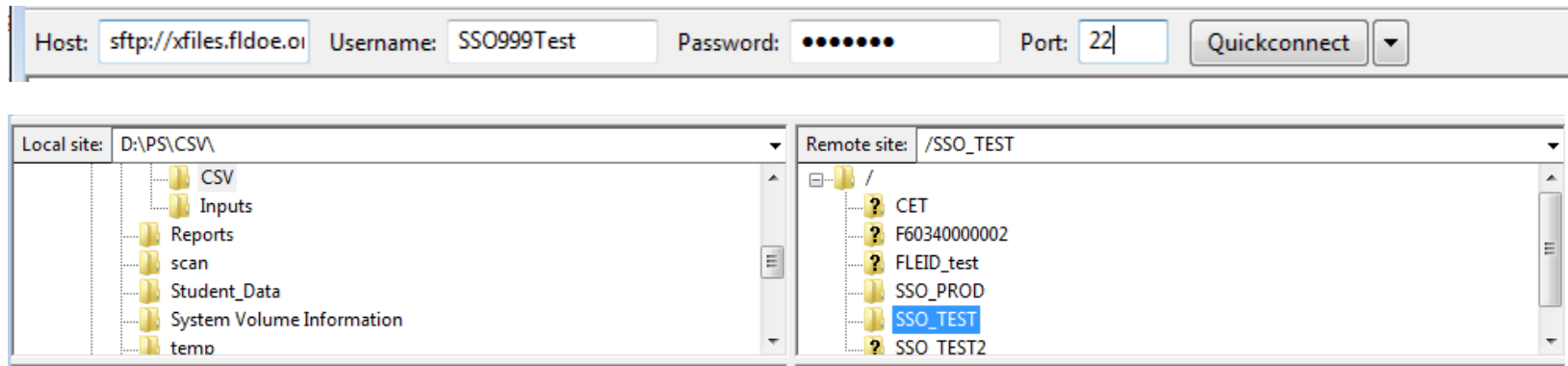
- SSO folder name changes
 - SSO_PROD
 - SSO_TEST
- New folders in 2015
 - Enrollment Directory
 - Data Quality/Data Edits
 - Florida Education ID

OLD		NEW	
Filename		Filename	
..
CET	CET	CET	CET
PROD	PROD	SSO_PROD	SSO_PROD
SSO-INFO	SSO-INFO	SSO_TEST	SSO_TEST
TEST	TEST		

Directories

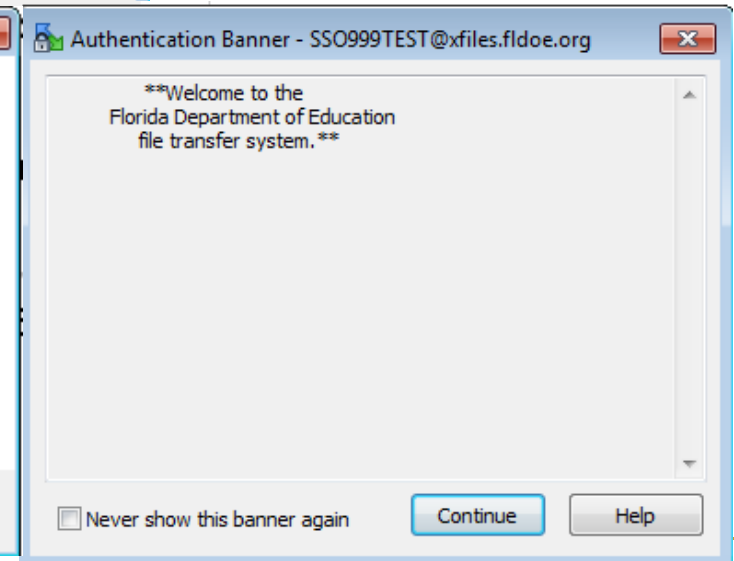
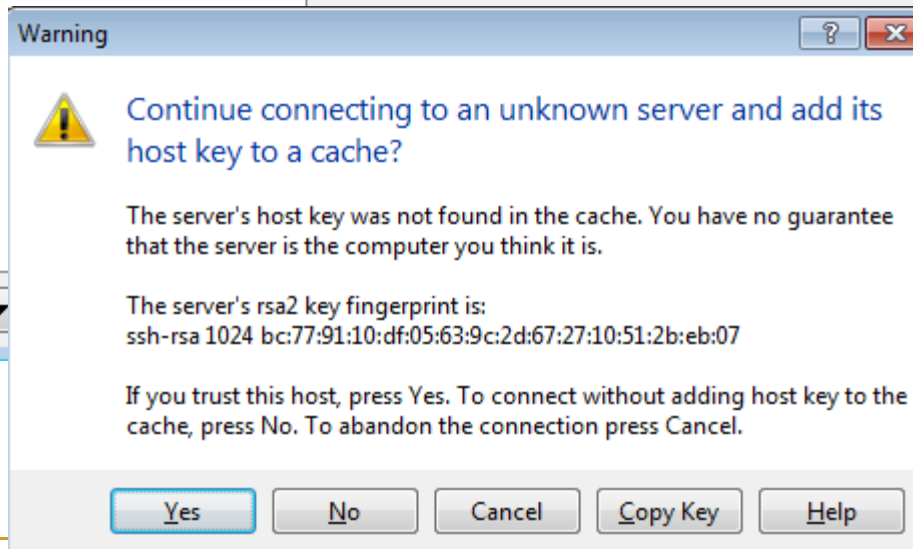
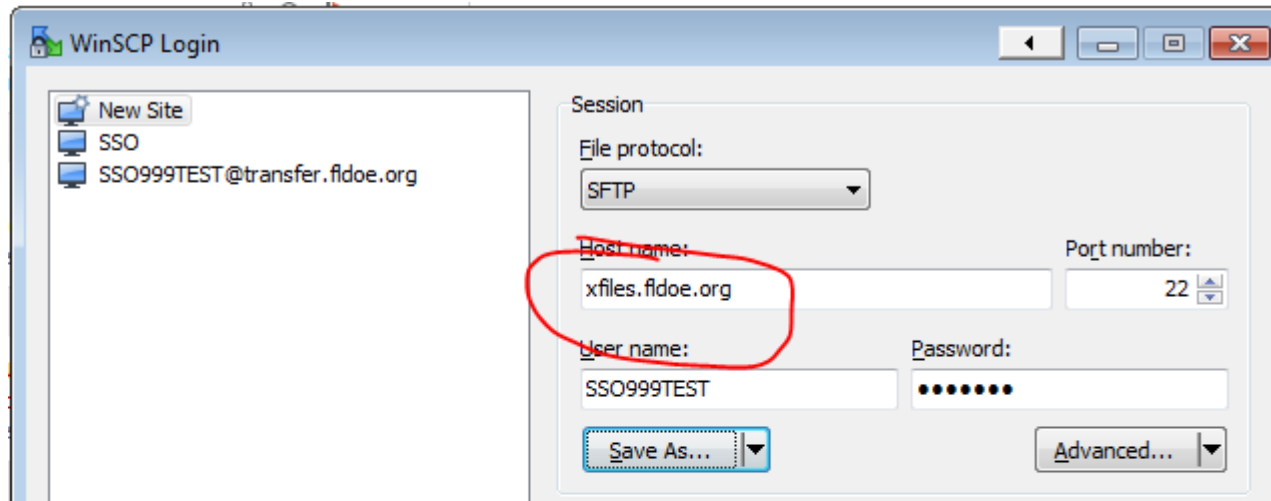
- CET
 - Used to upload files to CET for processing.
- SSO_PROD
 - Used to upload Identity and authorization CSV files for production processing.
- SSO_TEST
 - Used to upload Identity or a combination of Identity/Authorization files for automatic pre-flight testing. Note: The files are not processed in SSO Test system.

Using FileZilla



```
Status: Retrieving directory listing of "/SSO_TEST" ...
Status: Listing directory /SSO_TEST
Status: Directory listing of "/SSO_TEST" successful
Status: Connecting to xfiles.fldoe.org...
Status: Connected to xfiles.fldoe.org
Status: Starting upload of D:\PS\CSV\2-Identity-071414115040.csv
Status: local:D:\PS\CSV\2-Identity-071414115040.csv => remote:/SSO_TEST/2-Identity-071414115040.csv
Status: File transfer successful, transferred 16,384 bytes in 5 seconds
Status: Retrieving directory listing of "/SSO_TEST" ...
Status: Listing directory /SSO_TEST
Status: Directory listing of "/SSO_TEST" successful
Status: Disconnected from server
```

Using WinSCP



Communication & Security

- FLDOE needs email distribution lists for each directory
 - SSO_TEST
 - SSO_PROD
 - CET
- FLDOE needs the district's IP address or range that FTP traffic is coming from
- Send to fldoe-sso@fldoe.org



Questions?

SSO Admin Support

For admin-related issues including authorizations and file transfer questions

fldoe-ss@fldoe.org

850-245-9776

Service Center

For end user assistance and application questions

ienhelp@fldoe.org

855-814-2876

www.FLDOE.org



www.FLDOE.org



www.FLDOE.org